

ACCURACY



HARMONY



BALANCE

# WAT 63

## INSULATED DOOR & WINDOW SYSTEM

The door and window system in WAT 63 is a system that shows superior performance in sealing and heat insulation in applications. The system has a 24 mm heat barrier.

It is compatible with Amanos systems. System profiles are designed according to the Eurogrove duct structure.

You can use all opening accessories with a wide range of accessory application options. It is a system that PVC accessories can be applied in it. .



Air Permeability ( EN 12207 )	CLASS 1 (150Pa) ✓			CLASS 2 (300Pa) ✓			CLASS 3 (450Pa) ✓			CLASS 4 (600Pa) ✓			
Water Tightness ( EN 12208 )	2A (50Pa)	3A (100Pa)	4A (150Pa)	5A (200Pa)	6A (250Pa)	7A (300Pa)	8A (450Pa)	9A (600Pa)	E1050 (750Pa)	E1200 (1500Pa) ✓			
Resistance to Wind Load ( EN 12210 )	CLASS C1 ✓			CLASS C2 ✓			CLASS C3 ✓			CLASS C4 ✓			CLASS C5 ✓

### Certificate Values

Air Permeability ( EN 12207 ): 600 Pa

Water Tightness ( EN 12208 ): 1200 Pa

Resistance to Wind Load ( EN 12210 ): 2000 Pa

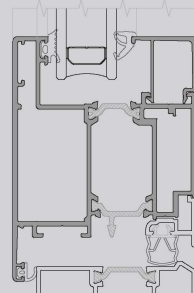
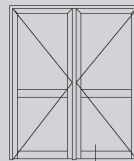
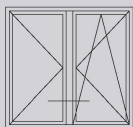
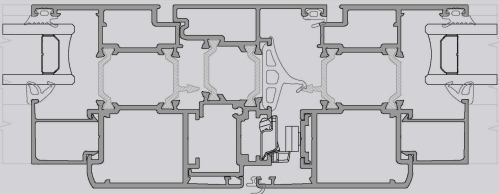
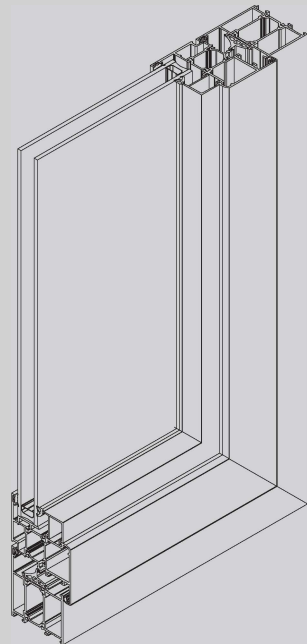
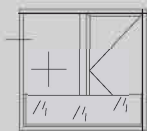
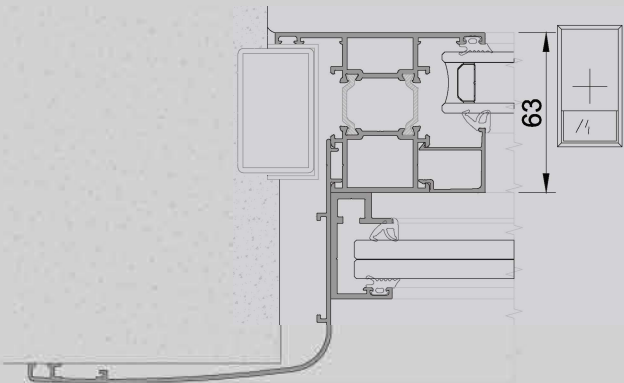
Safety Test: 3000 Pa



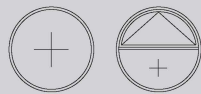
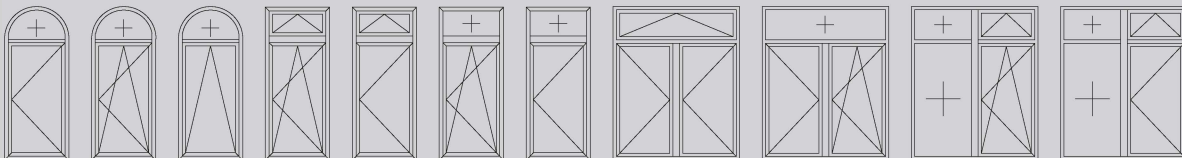
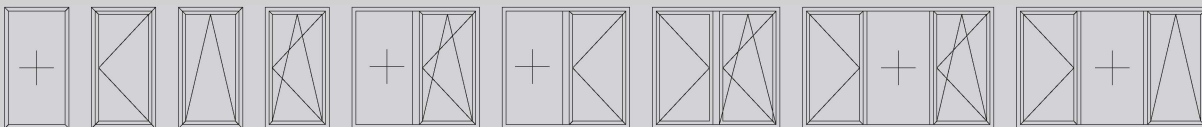
**AMANOS**  
aluminium systems

# WAT 63

INSULATED DOOR & WINDOW SYSTEM



## WINDOW OPENING TYPES



## DOOR OPENING TYPES

